

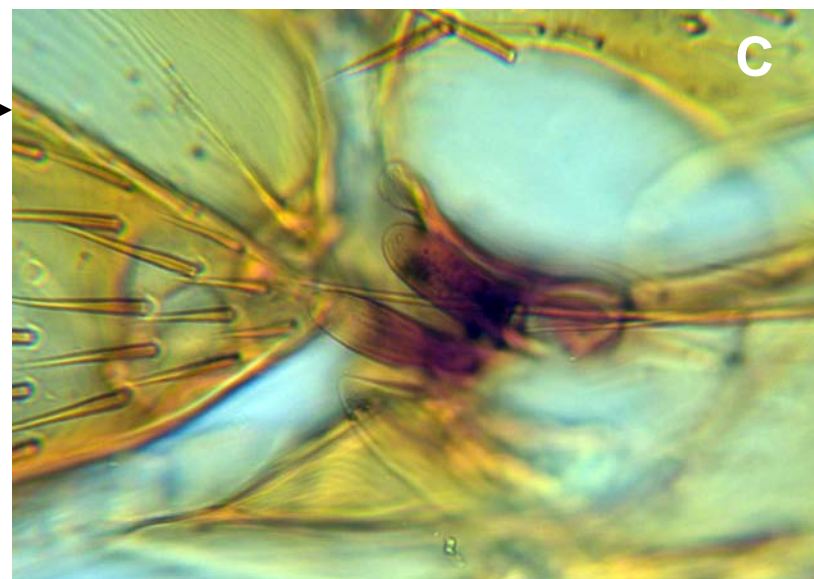
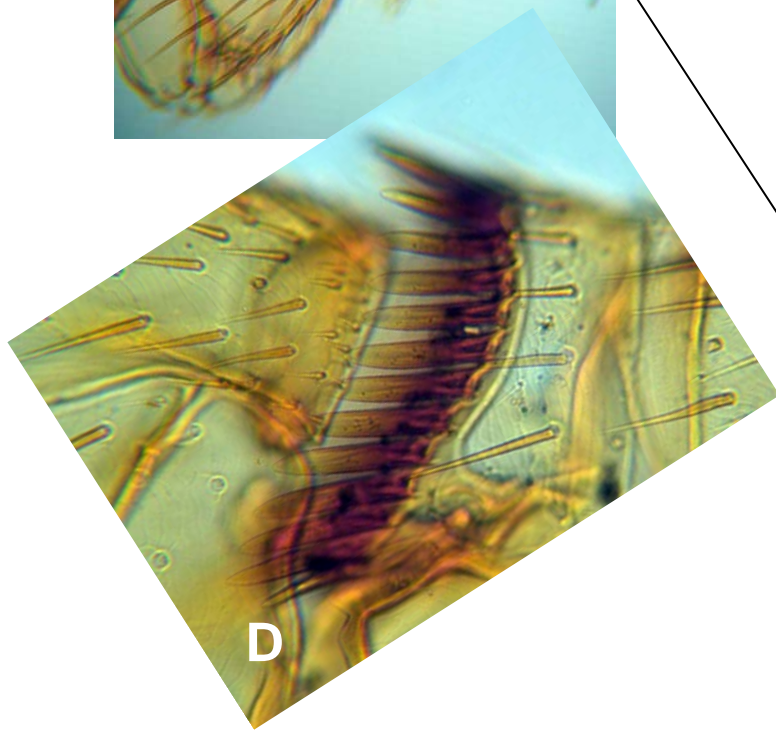
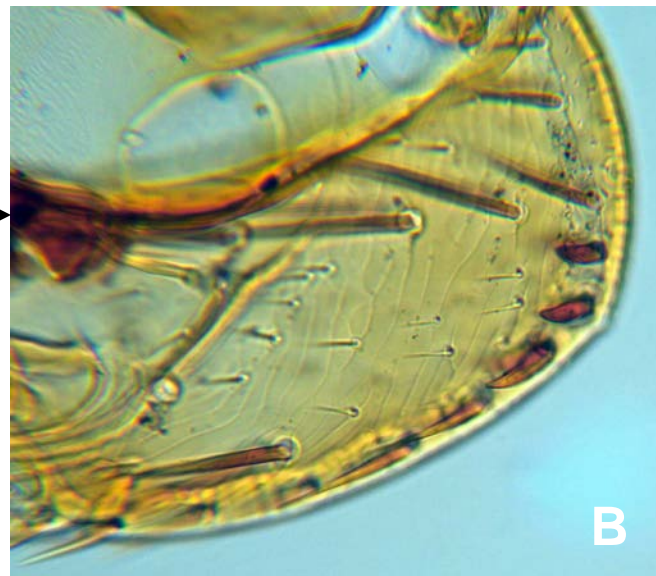
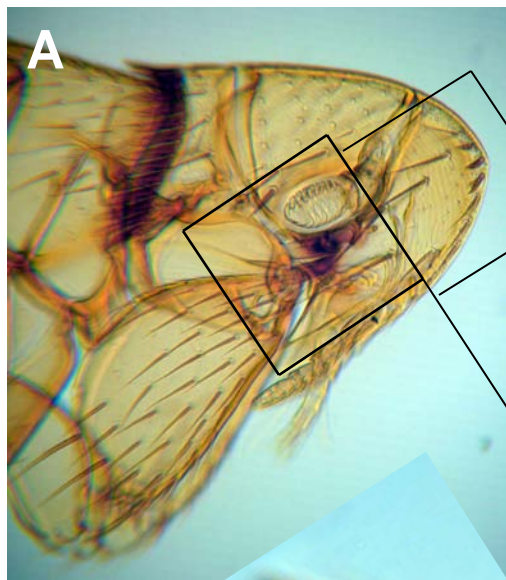
Peromyscopsylla hesperomys



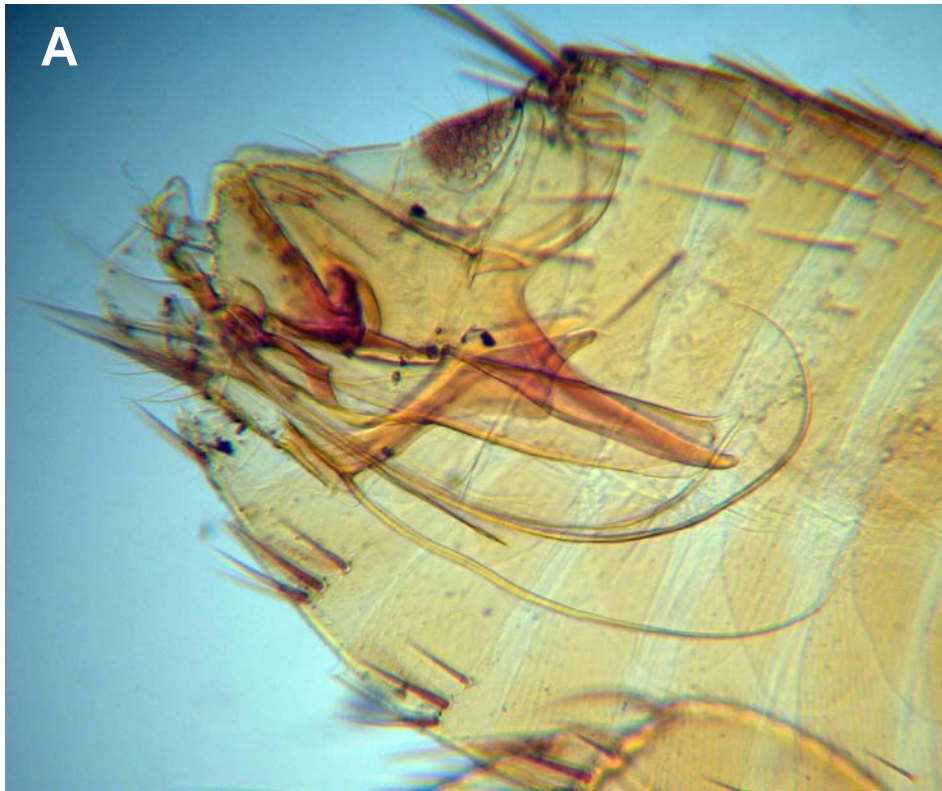
Peromyscopsylla hesperomys male, head.



Peromyscopsylla hesperomys head (A). Thick bristles on anterior margin of head (B) and genal ctenidium of 2 teeth (C) are characteristic features of this genus. Pronotal ctenedium enlarged (D).

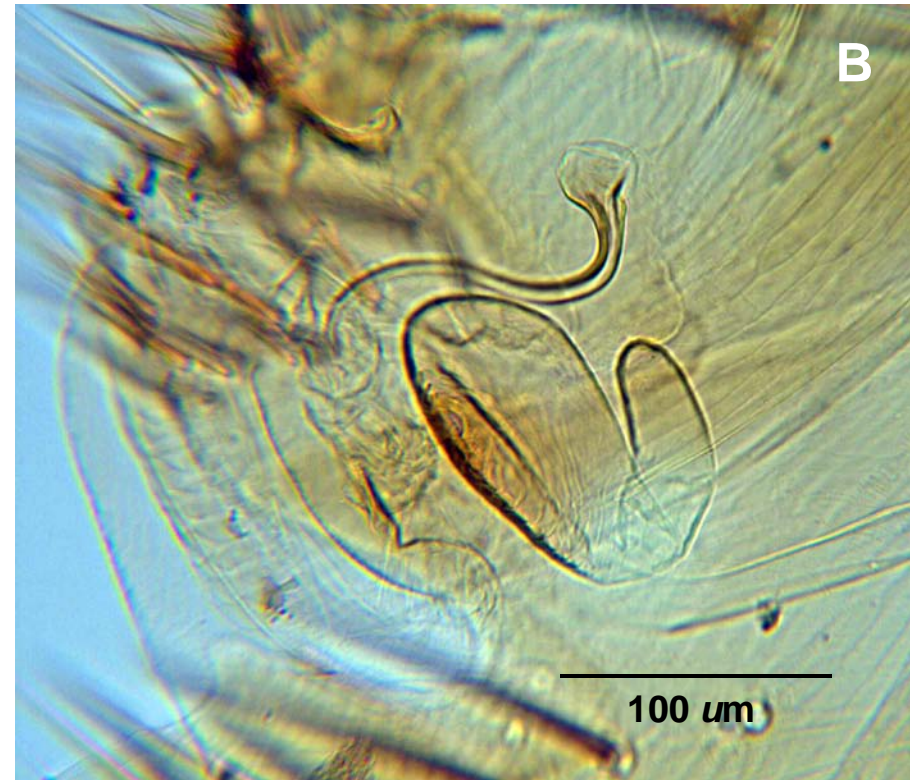


A



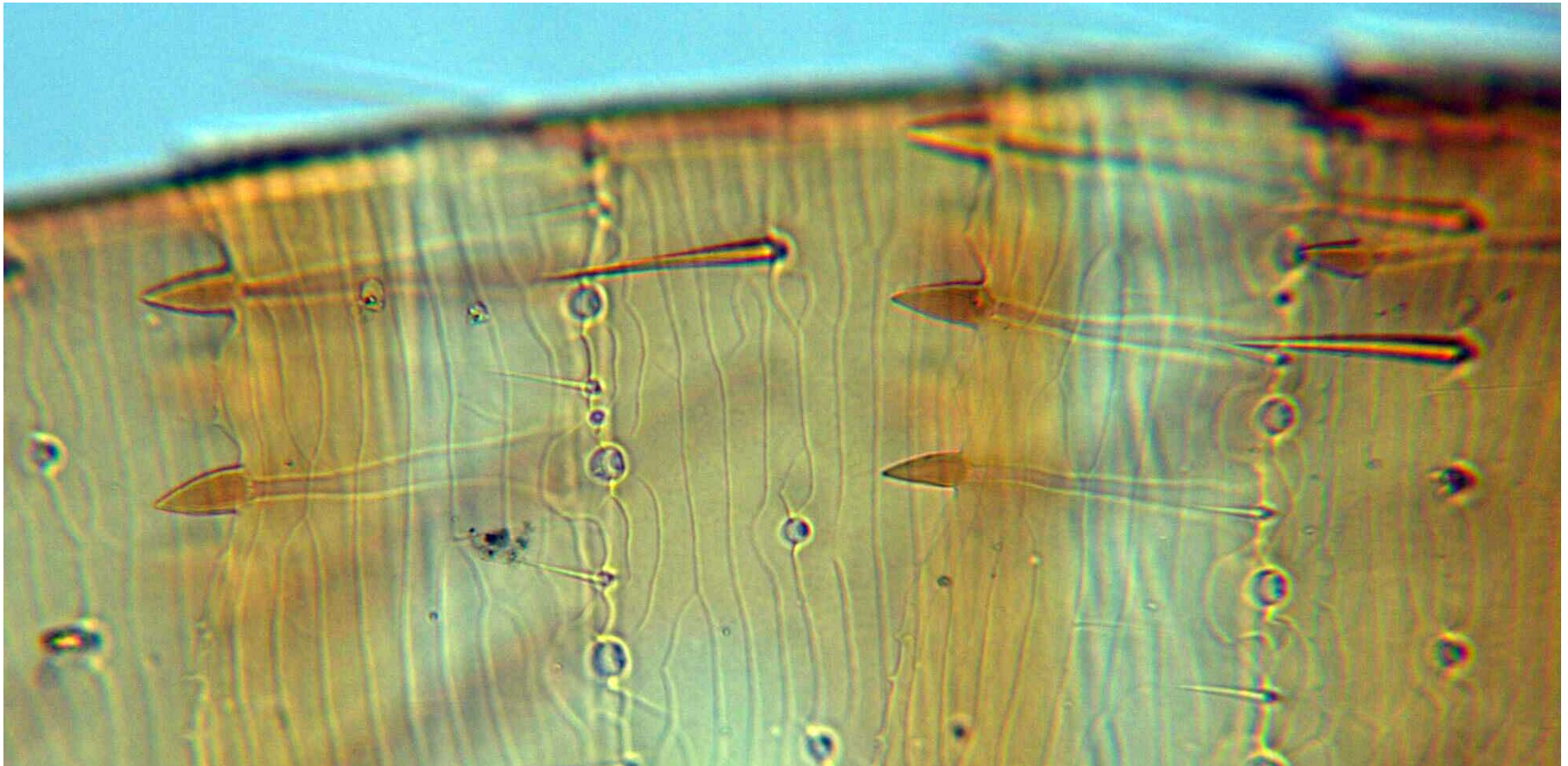
Peromyscopsylla hesperomys.
Male genitalia (A);
female spermatheca (B).

B



100 μm

P. hesperomys apical spines, dorsal abdominal segments.



P. hesperomys proventriculus (2 depths of field).

